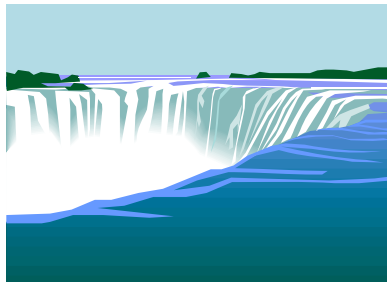


Community Vision and Voices  
for Western New York Health Care



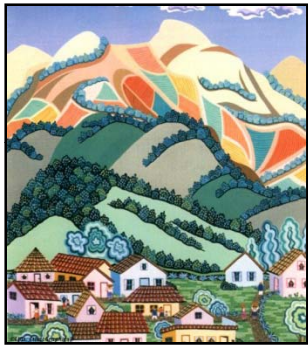
# *Going the Distance in Western New York*

A Medical Educator's Perspective  
on Optimizing Rural Access to  
Quality Health Care

Jeffrey Stearns M.D.  
Associate Dean, Milwaukee Academic Campus  
University of Wisconsin School of Medicine  
& Public Health  
Medical Director, Medical Education  
Aurora Health Care

December 10, 2007

# Overview



WARM students can pursue any medical specialty of their choice.

- The Pipeline Concept
- Preparation for Medical School
- Medical School
- Residency
- Recruitment
- Retention
- Conclusions

## *The Rural Pipeline*

- Pipeline Concept
- Linked with Proactive Local and Regional Community Advocacy



# NY Rural Pipeline

*adapted from IOM report*



## K- BS

Prepare elementary and HS students to basic science and expose to role models.

## Admissions

Recruit students with rural backgrounds and career goals.

## Medical Education Location

Locate education and training programs in rural areas.

## Supplemental Medical Curriculum

Use rural appropriate curriculum.

## Recruitment & Retention

Facilitate graduates seeking employment in rural NY

**Grow Rural NY Health Care Workforce!**

# *Preparation for Medical School*



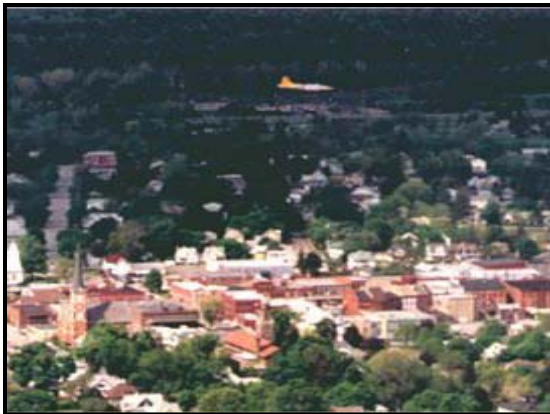
- Pre-HS Experiences
- High School
- Community College
- Regional 4 year Colleges
  - Public
  - Private
- Continuing Contact with Rural Communities

# Medical School



- Admissions
- Scholarships / Loans
  - Local
  - State
  - National
- Rural Curriculum
  - Year 1 and 2 experiences
  - Year 3 and 4 experiences
- Continuing Contact with Rural Communities

## ***What we know about Medical Education***



Formal training experiences can influence how actively physicians will later interact with their communities.

*Steiner et al.*

# *Rural Medical Education*



- Provide educational content from all four categories of community work (Pathman et al.)
  - Use of Community Resources
  - Community Participation
  - Sociocultural Awareness
  - COPC
- Place students in carefully selected rural settings
- Mentor relationships are important

# Residency



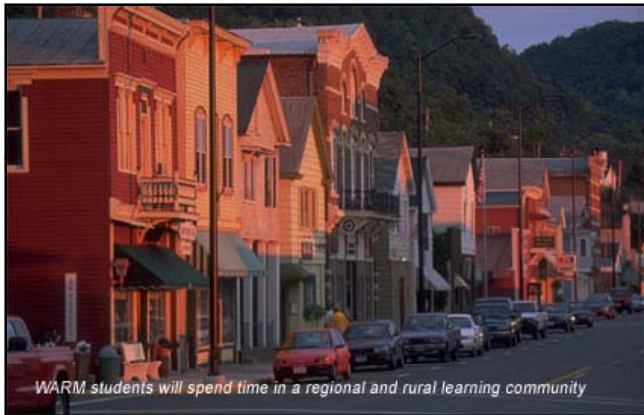
- Rural Curriculum
- Continuing Contact with Rural Communities
  - Rotations
  - Professional Role Models
- Loan Forgiveness

# *Recruitment*



- Targeted contacts with specific
  - Residencies
  - Individuals
- Explicit Local/Regional Loans and/or Debt Repayment

# *Retention*

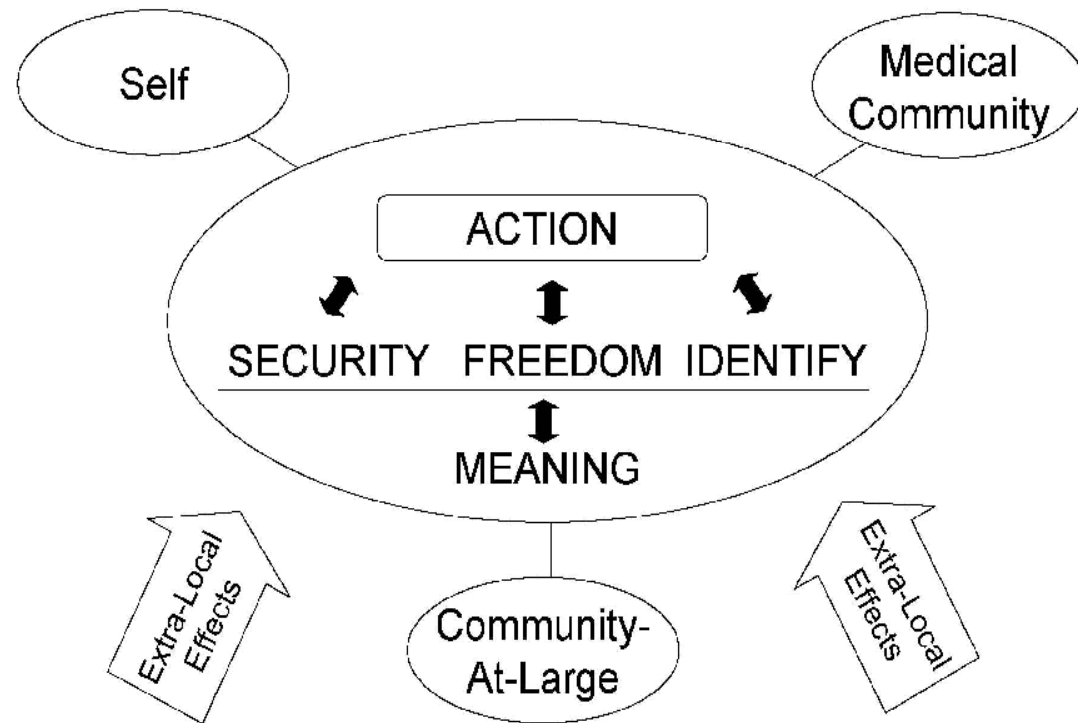


“The integration of physicians within rural communities is the basis for retention.”

*M. P. Cutchin*

# Retention

## Cutchin Model—Sense of Place



A framework for the physician integration process.

# Retention



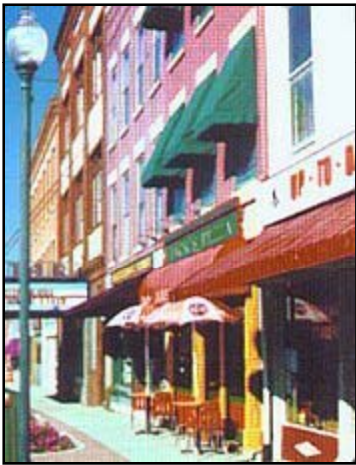
- Medical Community
  - Need a coordinated, user-friendly healthcare system
  - Collaboration
- Community-at-Large
  - Be Proactive in facilitating physician and family integration
  - Provide resources valued by physician

## ***Conclusions: Grow Your Own***



- Value Education
- Mentor
- Network & Advocate
- Provide Internships / Clerkships
- Offer Financial Incentives
- Create a User-Friendly Healthcare System
- Take the Lead on Integrating Physicians into the Community

## ***Rural Communities Can Do It***



- Place-based Education
- “the genius of small”
- Economies of adaptability and innovation
- Necessity is the Mother of Invention

**“The Edge of Chaos is where innovation and creativity happens!”**

*from R. Longnecker*

# *Discussion*

