



Mini Snap-Shot of SCHC's System of Care

Presented by:

Dr. Ruben P. Cowart
President and CEO



819 South Salina Street, Syracuse, New York 13202
(315) 476-7921 ext. 2427

SCHC's Mission & Unique Niche

SCHC's mission is to provide quality health care services to all individuals, with a commitment to those who might otherwise be excluded from the health care system, while remaining cost-effective, efficient, and competitive.

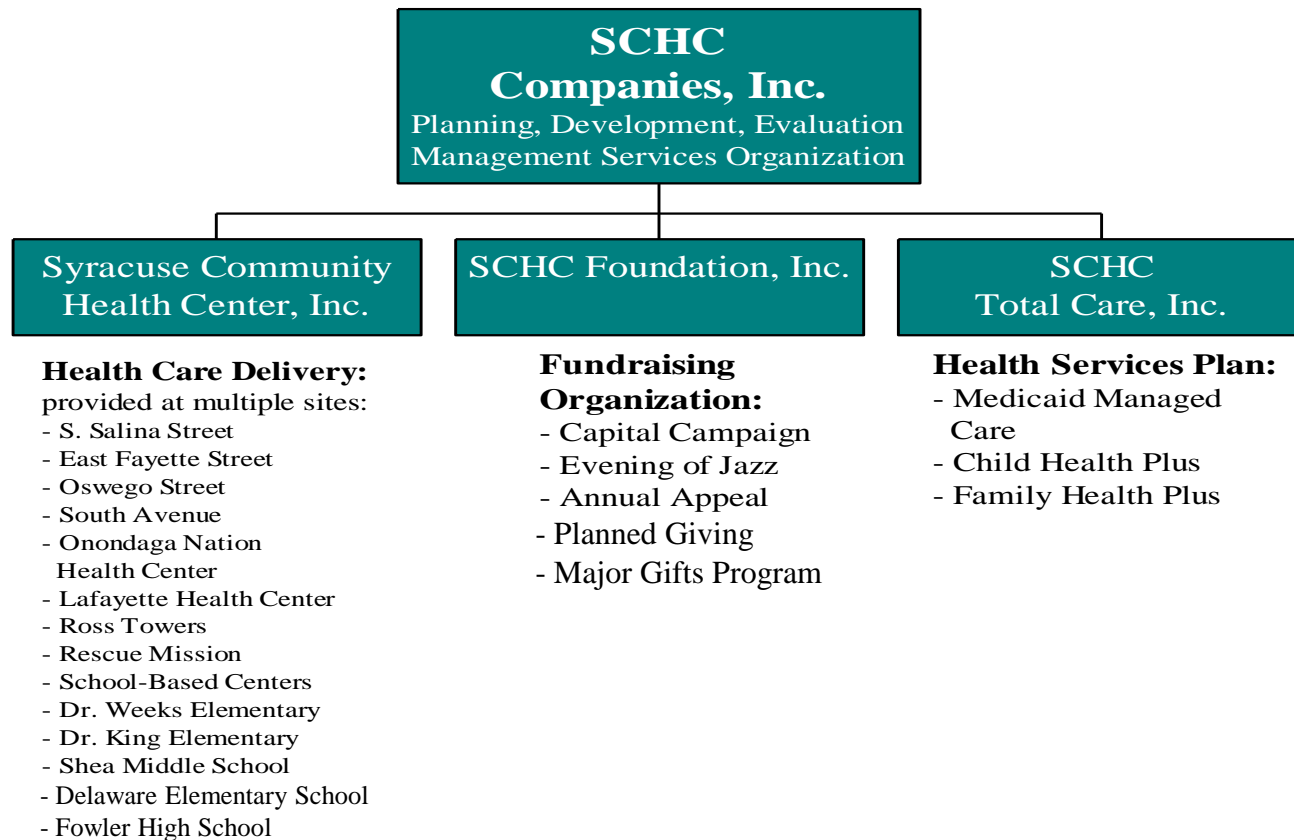
SCHC's unique niche is as a trusted guarantor of access to high quality health care services for all people.

SCHC's System of Care

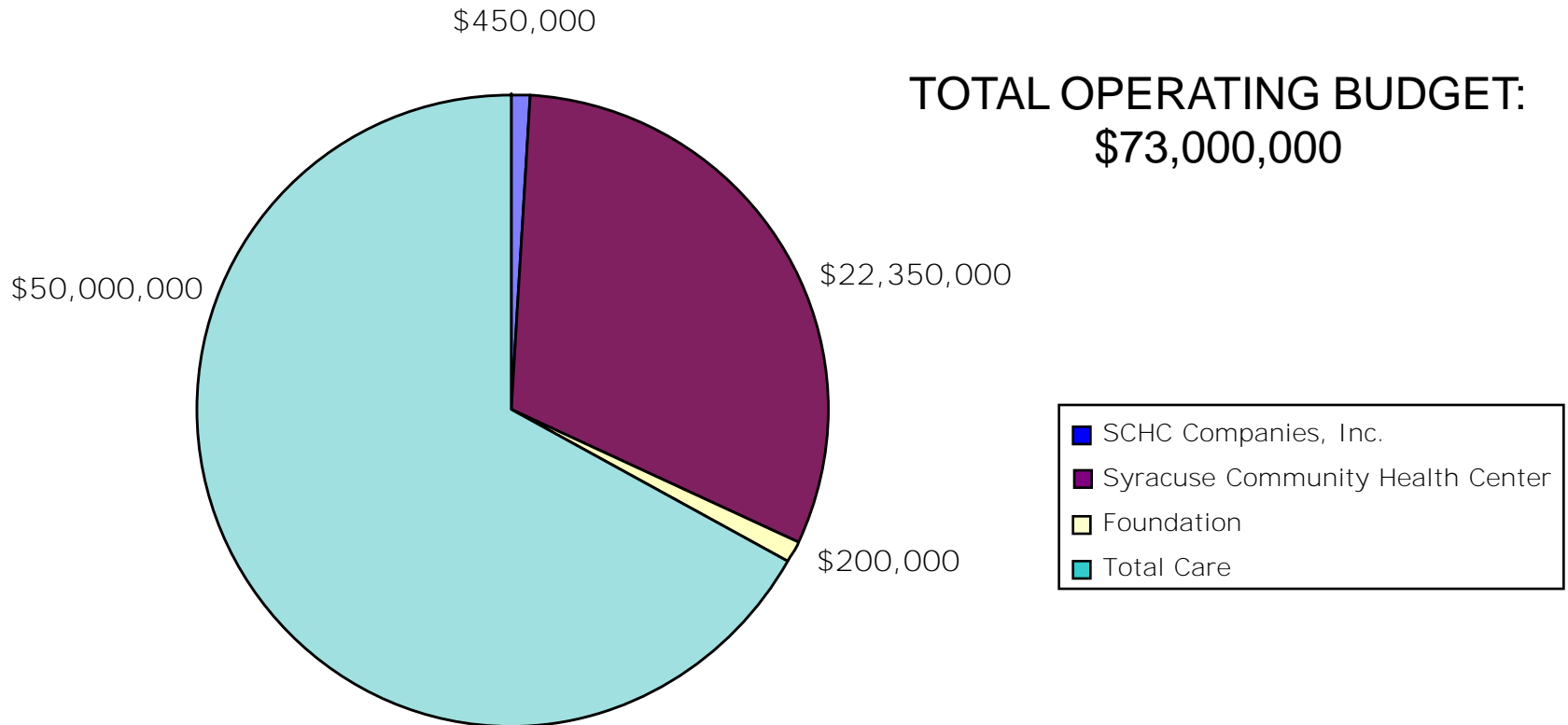
- Has an operational budget that exceeds \$73,000,000 annually
- Generates \$67,000,000 of the \$73,000,000 from patient seeing services
- Brings in \$5,000,000 from outside the State of New York in the form of Grants
- Spends approximately 90% of its operational budget within the local community
- Employs approximately 450 individuals
- Serves as the primary health care provider for more than 65,000 active users*

*Active User: an individual who has utilized the services of Syracuse Community Health Center, Inc. once during the past eighteen months.

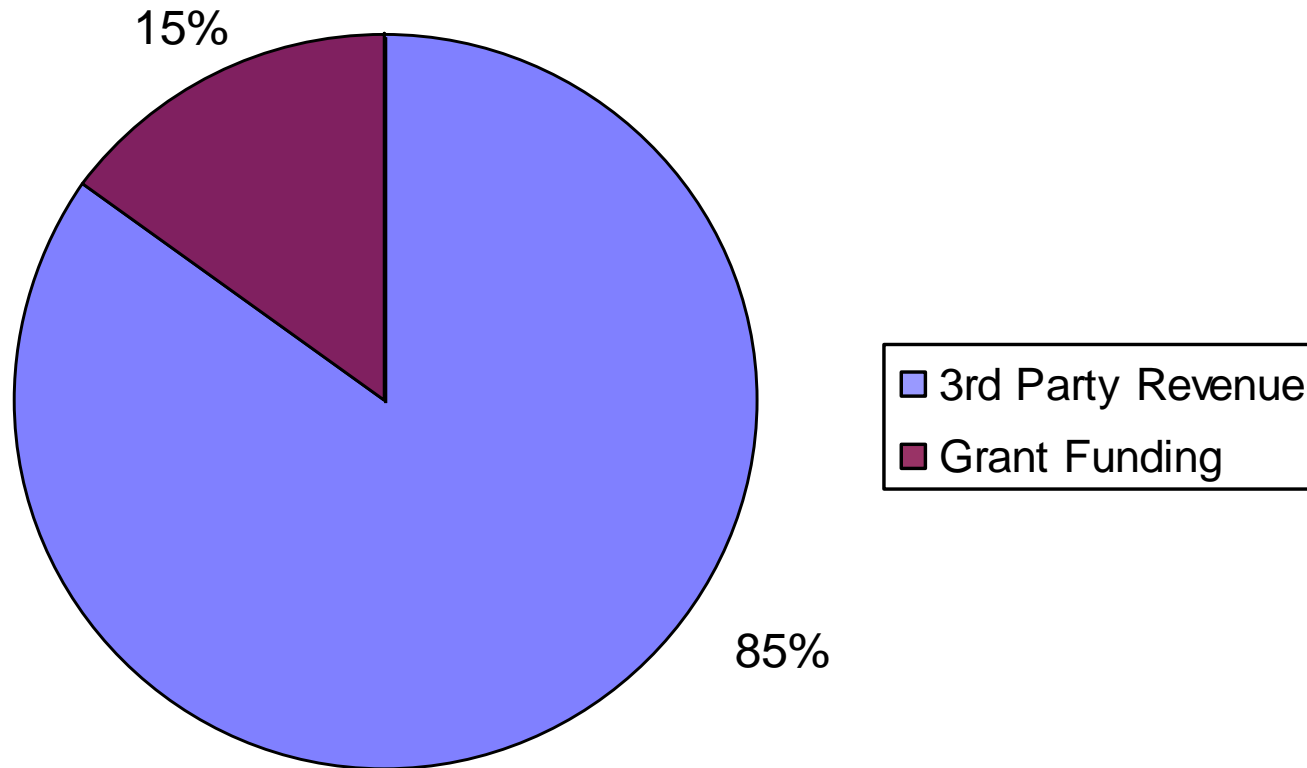
Corporate Organizational Structure



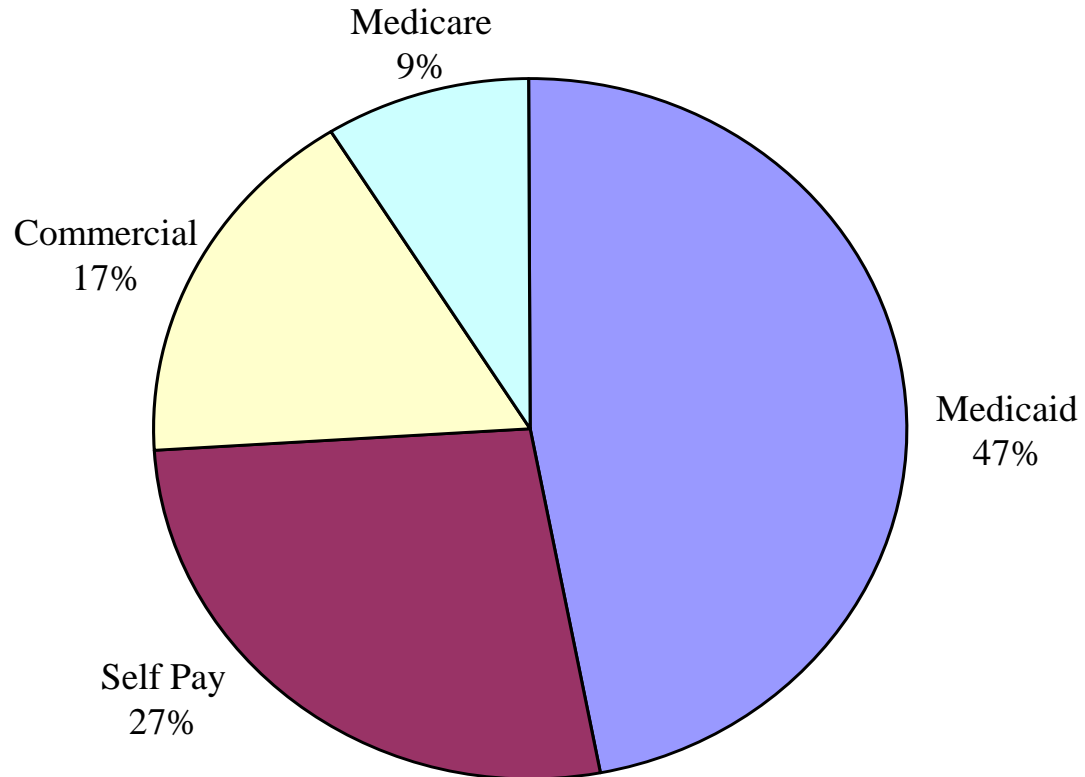
SCHC's Total Operating Budget



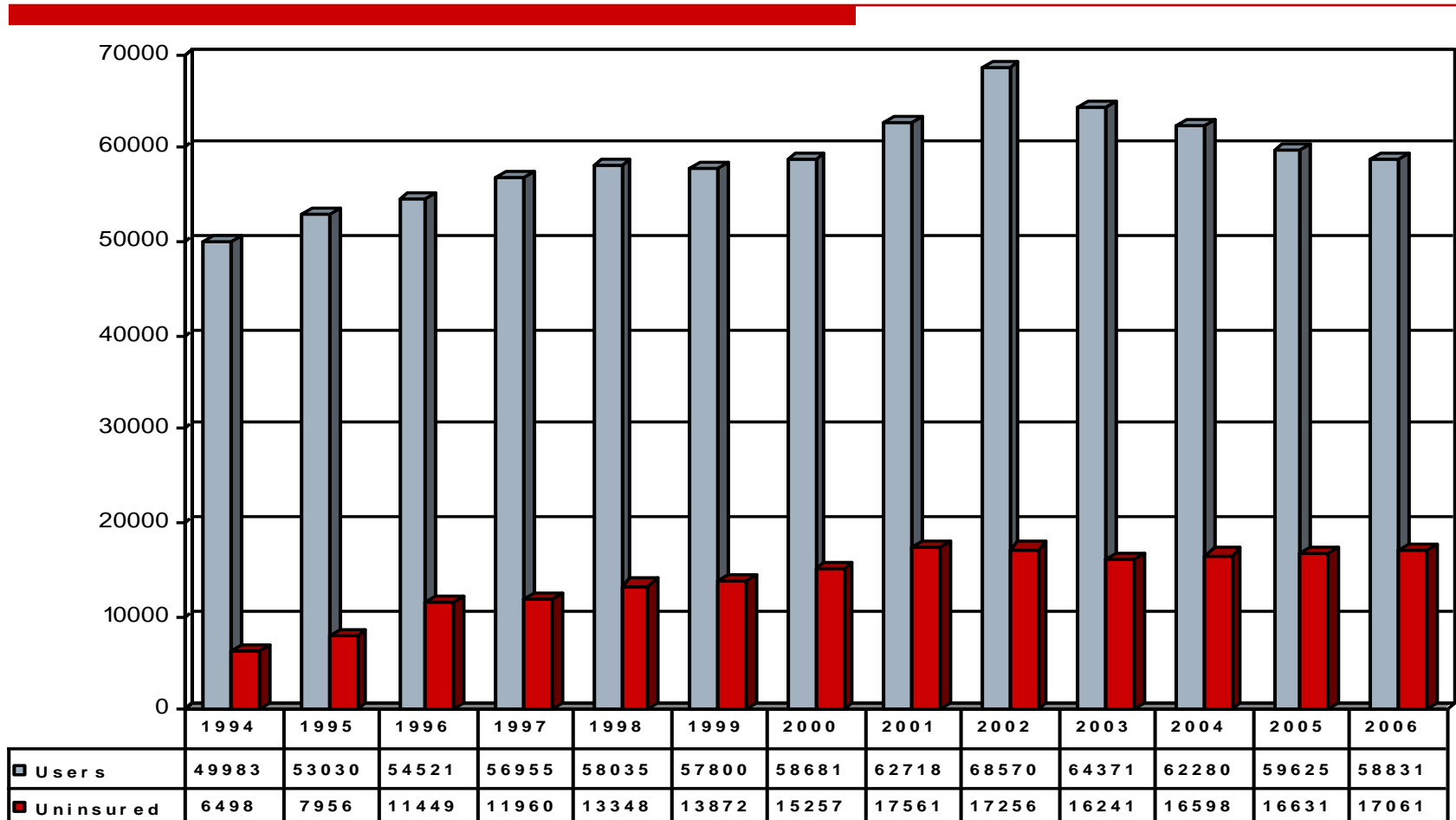
Syracuse Community Health Center Sources of Revenue



Payor Mix



Historical Health Center Utilization



Profile of SCHC's Primary Service Area



- Unemployment Rate: 18.1%
- All sections of Syracuse & Onondaga County.
- SCHC's Primary Service Area Contains:
 - 70% of Syracuse's population below the poverty level
 - 75% of Syracuse's Medicaid recipients
 - 58% of Syracusans who do not have a high school diploma
 - 50% of Syracuse's elderly population
 - 66% of Syracuse's single parent headed households
 - A population to physician ratio in excess of 5,200 to 1

SCHC's Scope of Services

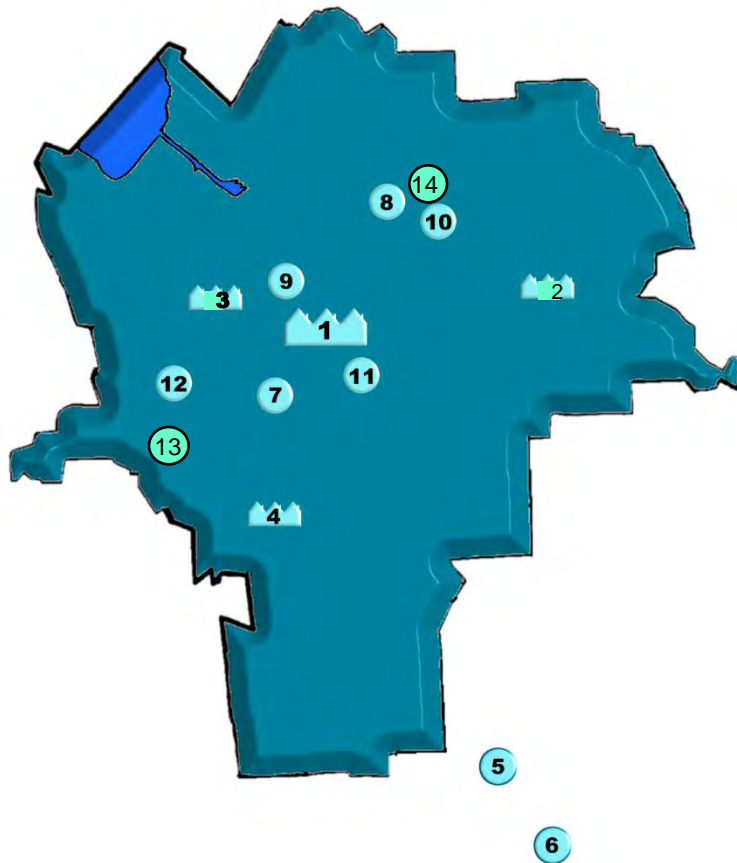
- Adult Medicine
 - Adolescent Medicine
 - Pediatrics
 - OB/GYN
 - Dental Care
 - Family Practice
 - Mental Health Services
 - Substance Abuse Services
 - Podiatry
 - Eye Care
 - Nutrition
 - Laboratory
 - Pharmacy
 - Radiology
 - Walk-In Care (Urgent Care)
 - Midwifery
 - Fast Track Immunization
 - 47-NURSE
 - Health Education
 - HIV/AIDS Education, Counseling and Treatment
 - Childcare Services
 - Translation Services
 - Comprehensive Medicaid Case Management
 - School-Based Health Center Services
 - Special Program Initiatives
 - Center for Health and Wellness (Health Education Resource Center)
 - AmeriCorps
-

Profile of SCHC's Provider Staff

Specialty	Total Number	Board Certified	Board Eligible
Physicians	35	30	5
Nurse Practitioners	10	7	3
Physician Assistants	3	3	
Midwives	3	3	
Dentists	14		
Dental Hygienists	6		
Podiatry	3		
Eye Care	3		
Nutritionist	2		
Social Workers	6		
CASAC	4		
Counselors	2		

TOTAL

91 Providers



SCHC's Primary Care Delivery Sites



7: Southwest Community Center; 8: Ross Towers; 9: Rescue Mission; 10: Dr. Weeks Elementary School Health Center; 11: Dr. King Elementary School Health Center; 12: Shea Middle School Health Center; 13: Delaware Elementary School; 14: Fowler High School.

SCHC Total Care, Inc.



TOTAL CARE



TOTAL CARE

Products and Services



Child Health Plus from New York State and Total Care provides free or low-cost health insurance for children who qualify up to age 19.

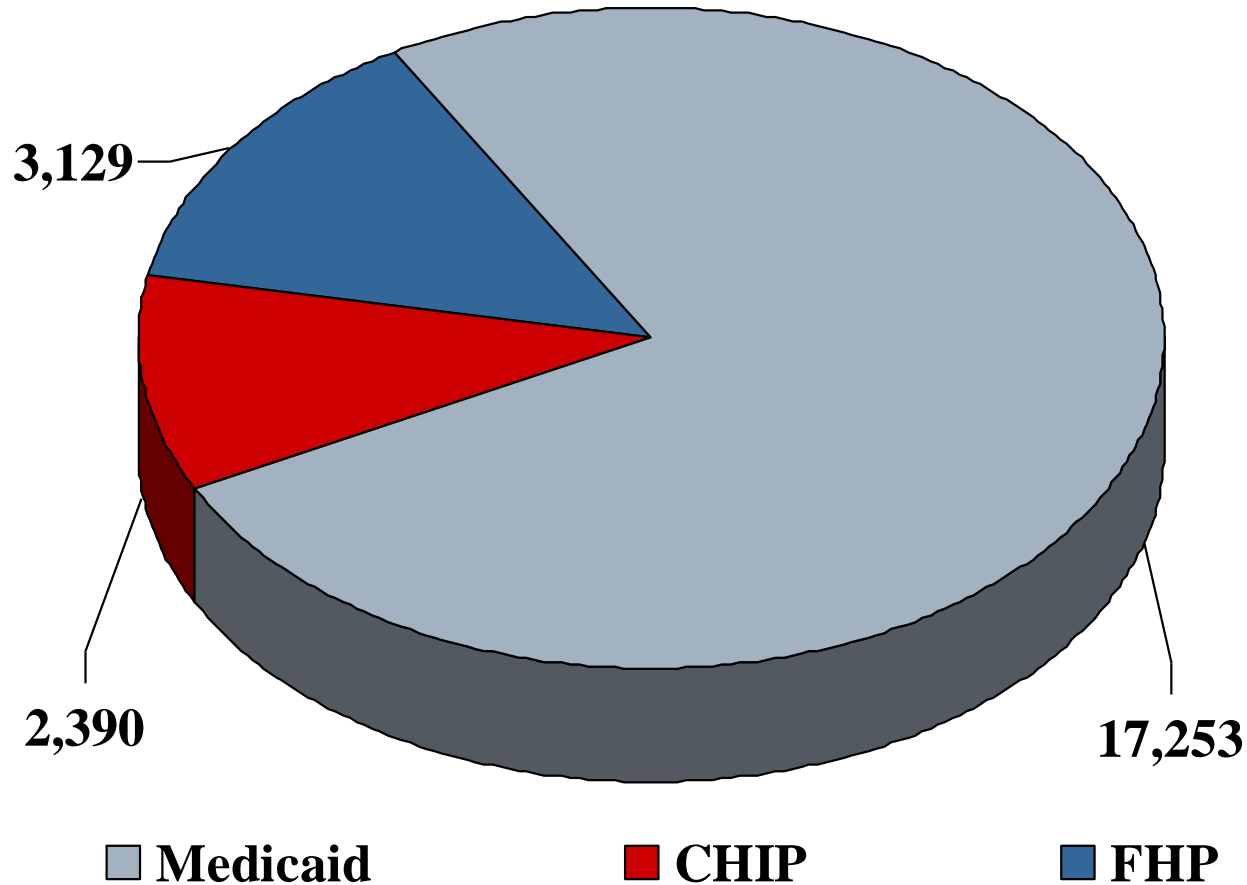


Total Care is the oldest and largest Medicaid Managed Care plan in Central New York, serving Onondaga And Oswego counties. With more than 1,000 providers, from primary to specialty care, Total Care “has patients Covered!”

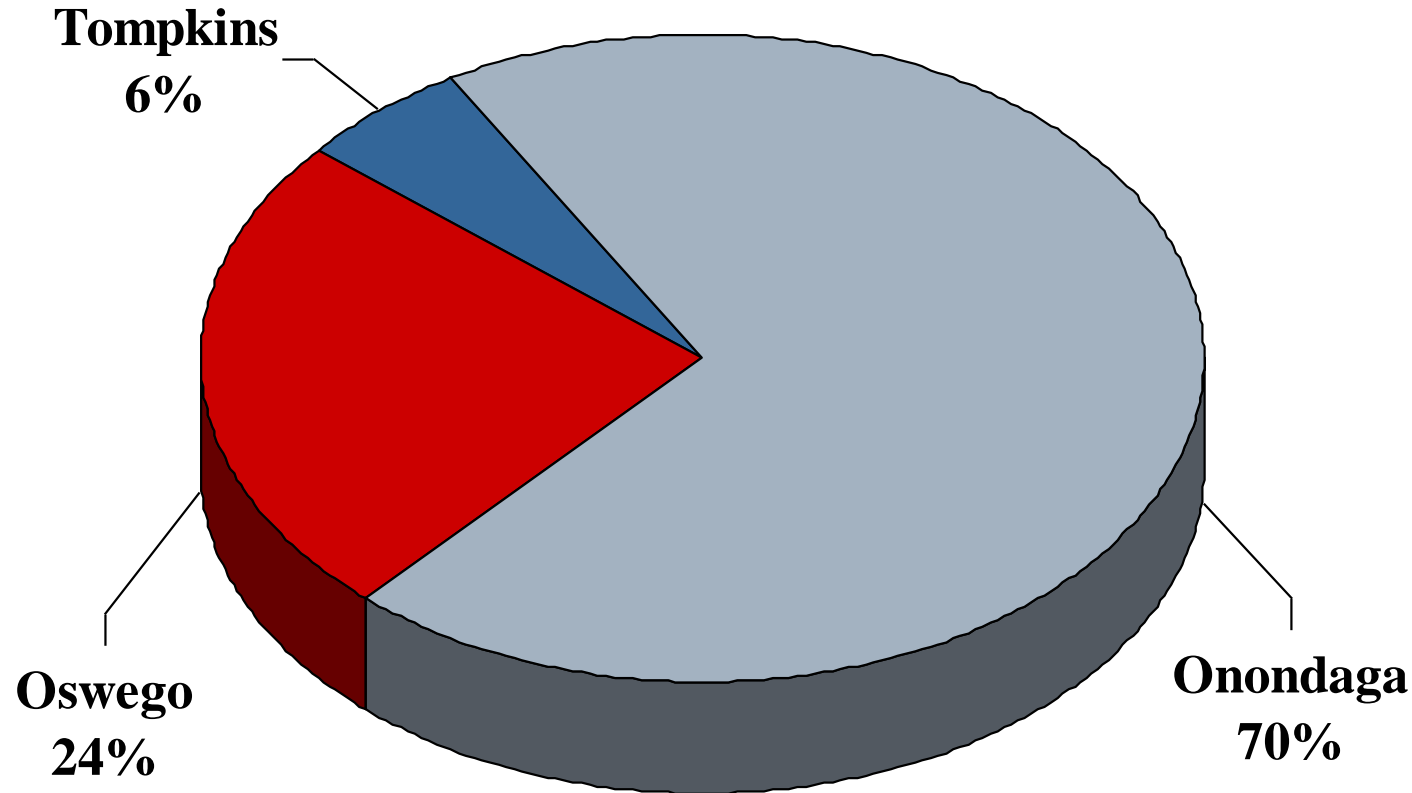


Family Health Plus is New York State’s health care program for adults who don’t have insurance but whose income is too high to get Medicaid.

SCHC Total Care, Inc. Membership by Program



SCHC Total Care, Inc. Membership by County



SCHC Foundation, Inc.



SCHC
Foundation
Inc.



The SCHC Foundation was founded to support the mission of Syracuse Community Health Center, Inc. Governed by a 17 member Board of Directors, SCHC Foundation has a two-fold primary purpose:

- To increase awareness of the organization and its mission;
- To raise funds to support the mission of Syracuse Community Health Center, Inc.

Current primary activities of the SCHC Foundation include:

- Planning for the 2nd phase of a Capital Campaign;
- Hosting “An Evening of Jazz,” SCHC’s annual fund-raising gala;
- Expanding its fundraising programs; and
- Enhancing the visibility and awareness of the organization’s System of Care.